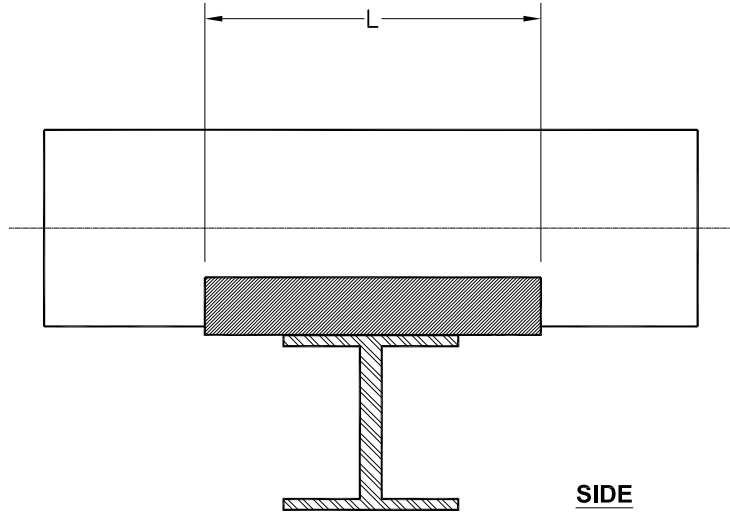
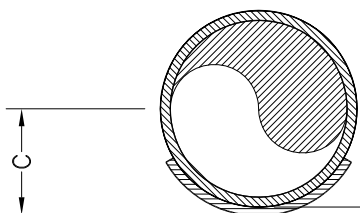


Information in this drawing is of a general nature. Detailed design information (part thickness, load ratings, etc.) are not part of this drawing. User should consult the manufacturer of the pipe support for detailed design information and proper selection of the pipe support for the application.



**SIDE**



**ELEV**

0.20 to 0.32" (5 to 8mm) up to 24"Ø  
 0.32 to 0.42" (8 to 10.5mm) 26" to 60"Ø

Nominal Pipe Size	Nominal O.D.	C	L	Minimum L
2"				
3"				
4"				
6"				
8"				
10"				
12"				
14"				
16"				
18"				
20"				
24"				
30"				
36"				
42"				
48"				
54"				
60"				

- NOTE 5.  $C = 0.5 * \text{Nominal O.D.} + T1$ .
- NOTE 4. T1 dimension is from T.O.S. to B.O.P.
- NOTE 3. Wear pad to be centered on structural support.
- NOTE 2. Wear pad to have minimum 120 degrees of contact (max. 180 degrees).
- NOTE 1. Saddle to be of the same material as the pipe.

This print and its contents are the property of Future Pipe Industries. Use of print or its contents is prohibited unless authorized in writing. This information is subject to the controls of the Export Administration Regulations (EAR). Diversion contrary to US Law is strictly prohibited.

**FIBERBOND®**  
 ENGINEERED COMPOSITE PIPING SYSTEMS  
 Manufactured by Future Pipe Industries  
 www.fiberbond.com      Baton Rouge, LA, U.S.A.

FRP "WEAR" PAD  
 FIG.210 - GENERAL DETAIL

REV: 6